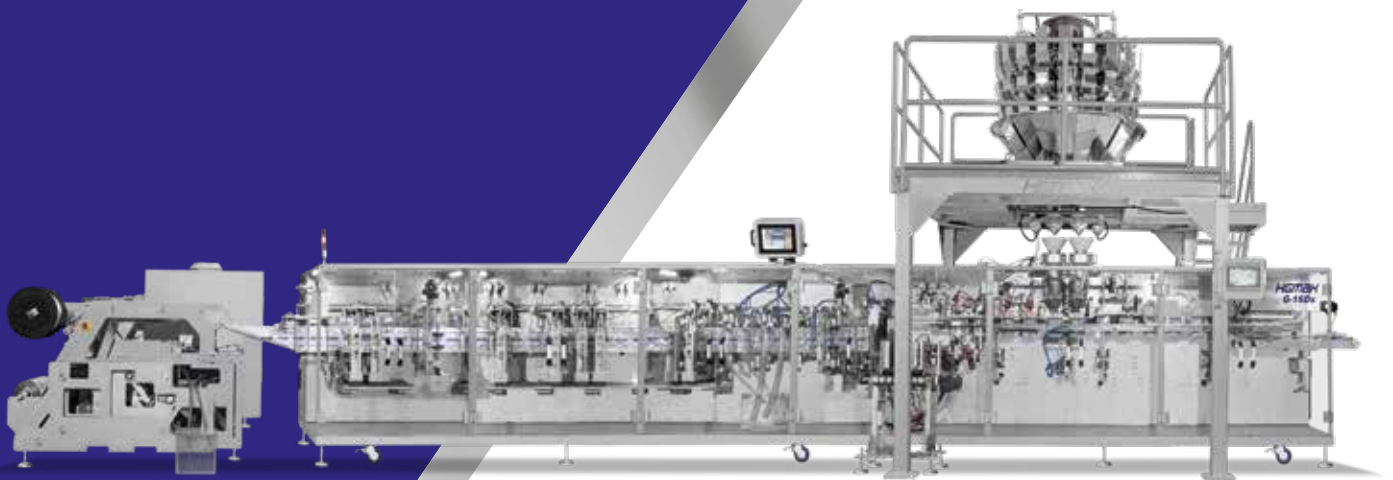


# HGMAK<sup>®</sup>

AUTOMATIC PACKAGING MACHINES

"Flexible Packaging Solutions"



**G SERIES**  
FULLY AUTOMATIC HORIZONTAL FORM,  
FILL & SEAL MACHINES

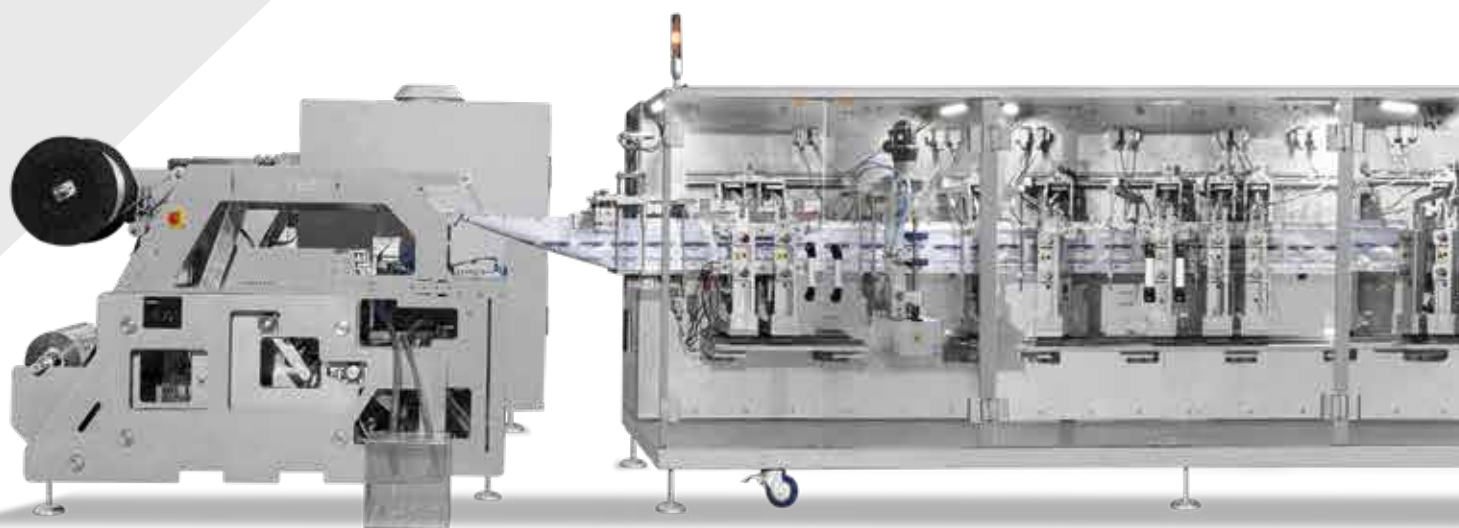


## G SERIES

# FULLY AUTOMATIC HORIZONTAL FORM, FILL & SEAL MACHINES

The G series packing machines are working from reel to final bag.  
These machines are designed for forming, filling and sealing of doypack style pouches,  
3 or 4 side sealed sachets, shaped pouches and pouches with spout.

G series can operate with multihead weighers , volumetric filling systems ,  
linear weighers ,cut-gate weighers and liquid filling systems.



## G SERIES GENERAL SPECIFICATIONS

Full servo motion control system

12" HMI LCD touch control operating system

PID heat control system

Pouch width automatic correction system

Remote control assistance system

Automatic Film centering system

Servo controlled cutting station

Servo controlled pouch opening system with vacuum

Photocell control system

Heavy duty construction

Servo controlled pouch stretching system

No open pouch no fill system with fiberoptic sensors

Zipper application

Easy open ( tear notch )application

Shaped bag molding devices

Top spout and corner spout application system

Round corner application system

Euro or punch hole application system

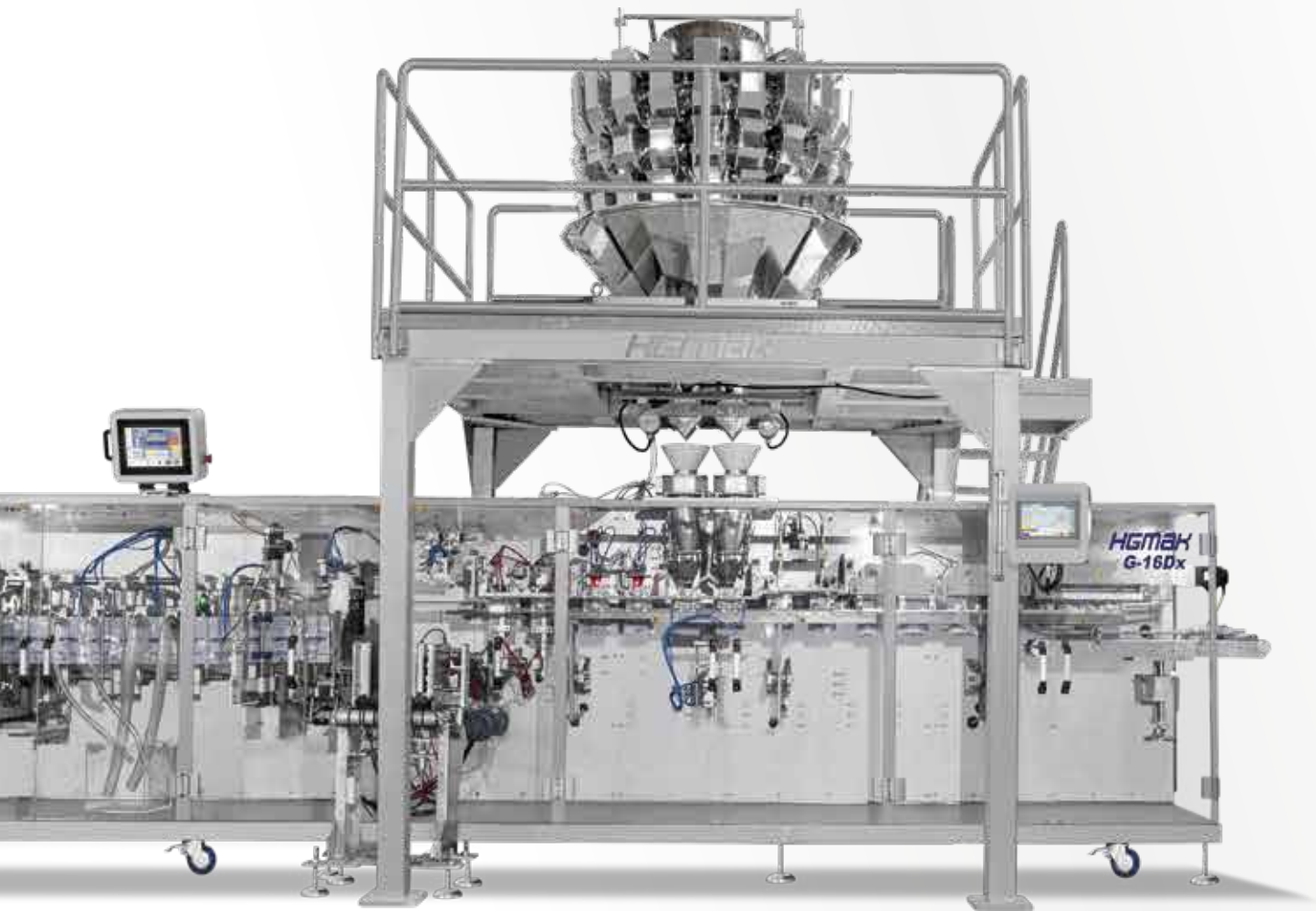
Gas flushing system

Inverter controlled roll unwind system

Printer and labeling connection system

Stainless steel machine body

Accordance with CE standarts



## G SERIES TECHNICAL SPECIFICATIONS;

### For SIMPLEX | DUPLEX | TRIPLEX | QUADRUPLIX

Models:

Pouch Width	Pouch Length	Operational Speed (Max.)
Min. 80 mm	Min. 100 mm	Simplex: 60 Bag. / Min
Max. 320 mm	Max. 460 mm	Duplex: 100 Bag. / Min.
		Triplex: 150 Bag. / Min.
		Quadruplex: 180 Bag / Min.

**i** Operational speed can change according to the product weight, bag or zipper type and Filling system.  
Pouch sizes and operational speed can change according to the model.  
All info subject to change.

**i** HGMAK is Designing Machines According to Your Pouch Sizes and Operational Speeds Requests.

## G SERIES

# FULLY AUTOMATIC HORIZONTAL FORM, FILL & SEAL MACHINES

### HGMAK G SERIES MACHINE'S LATEST SERVO CONTROL SYSTEM

Allows independent Operation Between the Different Stations with 15-23 Pieces Servo Motor.

Also G Series Allows Working With Zipper Applied Pouch, Sachet, Top or Corner Spouted Pouches, Premade Pouch Filling and Sealing at One Machine.



### Servo controlled Parallel Motion of the vertical sealing bars enables for

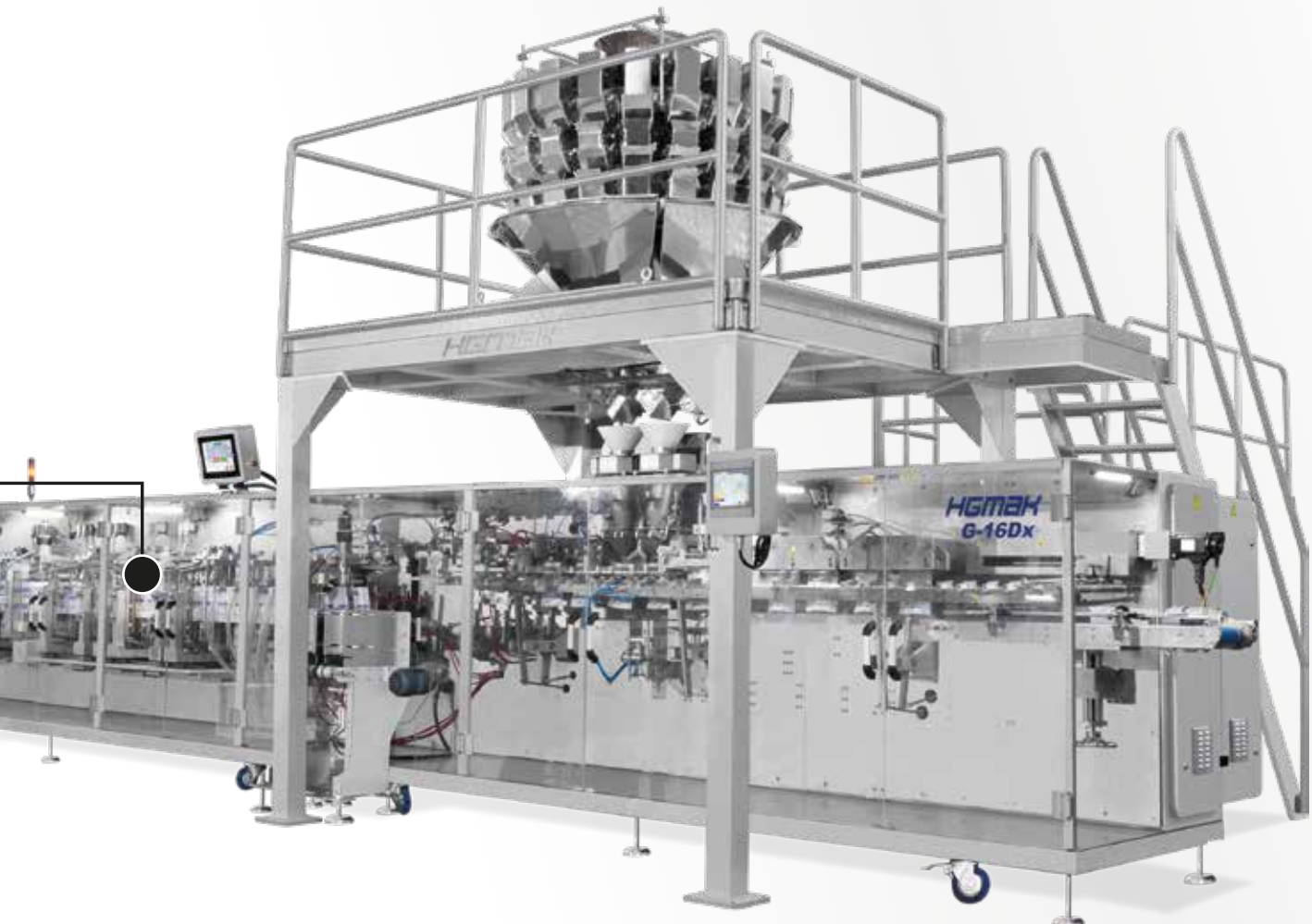
- Improved sealing quality
- Easier maintenance.



Pouch width automatic correction system, allows for a productivity up to **%50** higher than mechanical HFFS Machines.



# HGMak®



## **Fully Servo Controlled G series Machines allows for ;**

Operating pre-made pouch filling and sealing at one machine.

You can choose HFFS working for roll-stock and HFS working for pre-made pouches by using HMI Control Pannel.

## G SERIES

# MACHINES USE SERVO CONTROL SYSTEM THAT ALLOWS FOR;

Independent operations between the different stations. It allows to control all mechanisms by using HMI screen.

Servo Controlled transport system allows to advance heavy products easily.

They hold the pouches and transport them through different stations, from the pouch forming to the pouch top sealing.



**FILLING SYSTEMS**



VOLUMETRIC FILLING SYSTEM



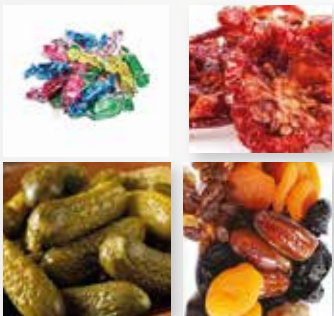
AUGER FILLING SYSTEM



CUT-GATE LINEAR WEIGHER



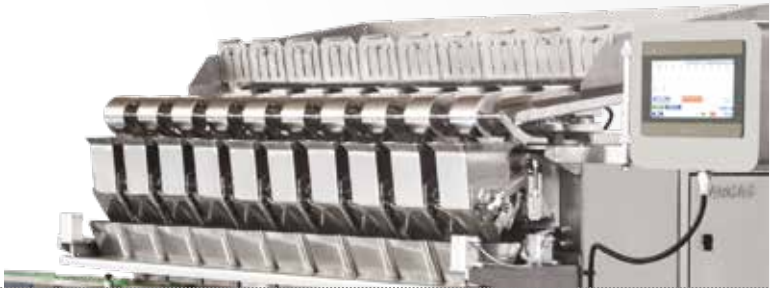
**MULTIHEAD WEIGHERS**



**LIQUID FILLING SYSTEMS**



**LINEAR WEIGHERS**





# HGMak®

AUTOMATIC PACKAGING MACHINES



Karakaya Sokak No: 1/6 D2 Blok  
Yazibaşı Torbalı İzmir TURKEY



(+90) 232 236 84 06



[www.hgmak.com](http://www.hgmak.com)



[info@hgmak.com](mailto:info@hgmak.com)



+90 541 348 38 82

CE